

SRG



Facilities Master Plan

Board of Trustees Briefing, October 25, 2017

Agenda



1. The Consultant Team
2. Planning Schedule
3. Topics & Approach
4. Discussion: Defining Success

OUR TEAM

SRG Partnership



Kent Duffy
Principal-in-Charge



Eric Ridenour
Project Manager,
Senior Planner



Nicolai Kruger
Planner, Higher
Education Architect



Aaron Pleskac
Athletic Facilities Resource



Lisa Petterson
Sustainability Resource

Biddison Hier



Tom Hier
Project Leader for
Space Analyses

Walker Macy



Michael Zilis
Principal Landscape Architect

Ken Pirie
Planner, Project Manager

Andrea Kuns
Landscape Architect

PAE

Scott Bevan
Principal Electrical Engineer

Nick Collins
Principal Mechanical Engineer

Kittelson & Associates

Phill Worth
Principal Planner

Fred Wismer
Senior Engineer

BHE Group

Monica Anderson
Principal Civil Engineer

Geoff Larsen
Civil Engineer, Project Manager

Schedule

	16-Oct-17	23-Oct-17	30-Oct-17	06-Nov-17	13-Nov-17	20-Nov-17	27-Nov-17	04-Dec-17	11-Dec-17	18-Dec-17	25-Dec-17	01-Jan-18	08-Jan-18	15-Jan-18	22-Jan-18	29-Jan-18	05-Feb-18	12-Feb-18	19-Feb-18	26-Feb-18	05-Mar-18	12-Mar-18	19-Mar-18	26-Mar-18	02-Apr-18	09-Apr-18	16-Apr-18	23-Apr-18																					
		WOU Board				Thanks-giving		Finals	Winter Break	Winter Break	Campus Closed	Winter Break			WOU Board									Finals	Spring Break				WOU Board																				
Discovery																																																	
Work Sessions			WS										WS																																				
Reports										D																																							
Exploration																																																	
Work Sessions																		WS																															
Reports																													D																				
Decision																																																	
Work Sessions																								WS																									
Reports																										D			D																				

Supporting the Strategic Plan

Vision:

To become Oregon's **campus of choice** for students, faculty and staff who seek a **student-centered learning community**.

STUDENT SUCCESS

Provide a **campus environment that enhances learning** & the development of the whole person.

ACADEMIC EXCELLENCE

Ensure appropriate class sizes to **maximize faculty-student & student-student interactions**.

COMMUNITY ENGAGEMENT

Expand **activities & partnerships** with local & regional organizations.

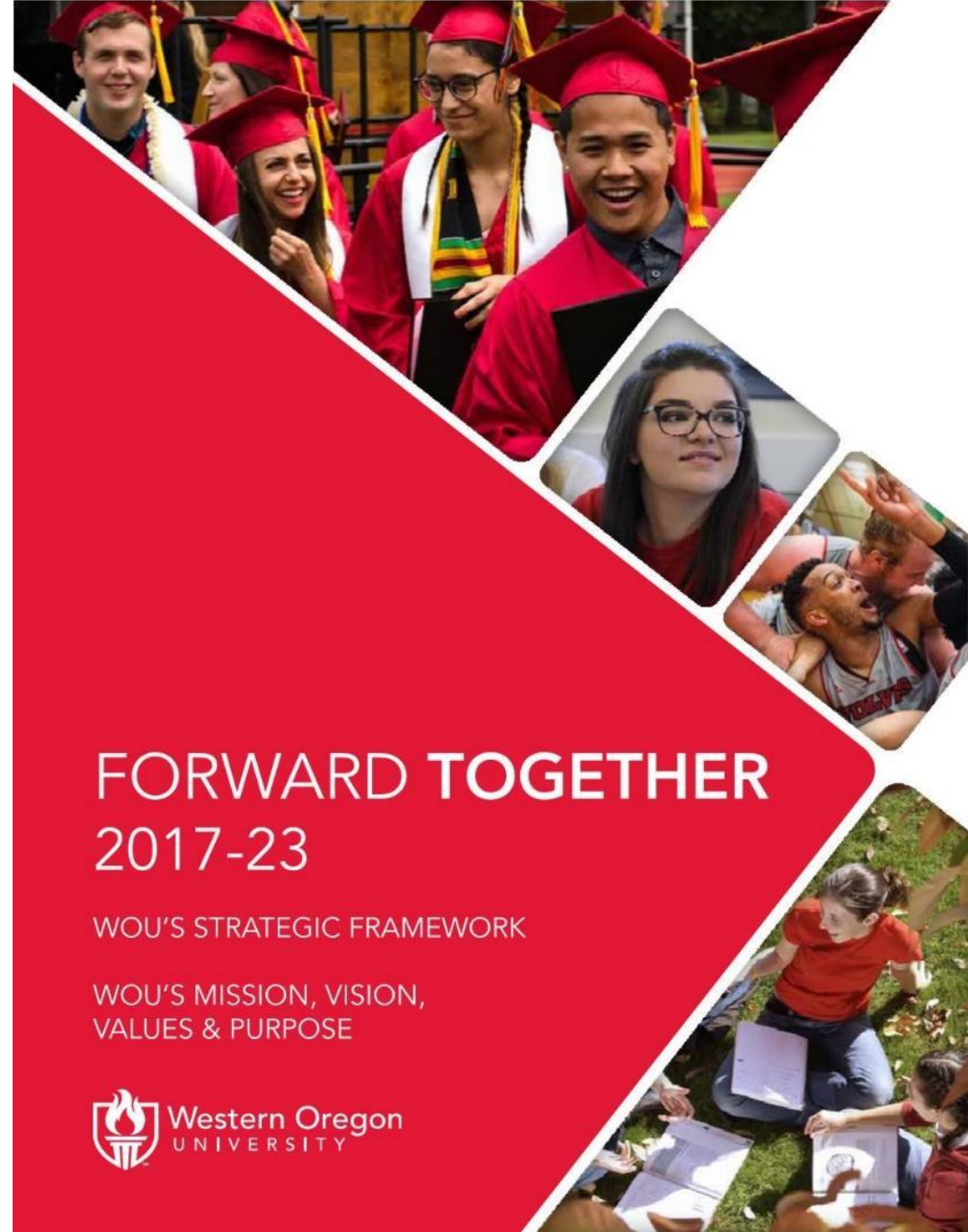
ACCOUNTABILITY

Strengthen & expand **community college** partnerships...

SUSTAINABILITY

Increase & support **sustainable environmental systems** for campus grounds, infrastructure & physical facilities.

Ensure the availability & **effective utilization** of **accessible & comfortable** classrooms, offices & meeting spaces



FORWARD TOGETHER 2017-23

WOU'S STRATEGIC FRAMEWORK

WOU'S MISSION, VISION,
VALUES & PURPOSE





- Strength:

Character: Beautiful Campus; Compact & Walkable Scale

- Challenge:

Exposure: 'If we can get people here, they see what a gem this campus is.'



Strength: Bold **Open Spaces** (Grove, etc.)

Challenge: Make the Campus Experience More **Cohesive**

Strong Existing Programs:

- Education:
 - Deaf Studies/ASL
 - Leadership
 - Health & Exercise
- Music
- Gerontology
- Pre-Nursing
- Business
- Behavioral Sciences

Challenge:

- What's Next?



Class of 2017 demographics

- 1,668 individuals have earned 1,680 degrees
- ~975 are attending Commencement
- 86% of grads are receiving a bachelor's
- 14% of grads are receiving a master's
- Our youngest grad receiving a bachelor's is 19 years old
- Our youngest grad receiving a master's is 21 years old.
- The most experienced grad receiving a bachelor's is 63 years young
- The most experienced grad receiving their master's is 61 years young
- Grads come from 33 of 36 Oregon counties; 25 states and 9 countries
- 11 students have completed 2 bachelor's degrees
- One student is completing 2 master's degrees.
- 14 students receiving a bachelor's degree have a 4.00 GPA
- 63 students receiving a master's degree have a 4.00 GPA
- 166 students are graduating Summa cum laude (GPA >3.8)
- 128 students are graduating Magna cum laude (GPA 3.65-3.79)
- 135 students are graduating Cum laude (GPA 3.5-3.64)

#wougrad



University Diversity Committee (UDC)
Diversity Initiative Grant

NON-TRADITIONAL STUDENT LOUNGE



Come in and meet fellow non-traditional students, make connections, hang out or have a cup of coffee.

What is a Non-Traditional student?
WOU defines a Non-Traditional student as any student that is, but not limited to:

- 25 years or older
- Has a dependent
- Returning to school after an extended break



Women of Culture Celebration Dinner

3.8.17 • 6-8 p.m.
The Summit • Tickets \$3



Nationally renowned spoken word poet & author
Dominique Christina




2016 AFRICAN CULTURAL NIGHT

May 7 5 p.m. - 7 p.m.

AFRICAN FOOD, FASHION SHOW, AFRICAN DANCE, KEYNOTE ADDRESS AND MORE \$3

INSIDE AFRICA: THE OPPORTUNITIES ABOUND
KEYNOTE ADDRESS WILL BE PROVIDED BY DR. ISIDORE LOENBE, ASSOCIATE PROFESSOR OF ANTHROPOLOGY AT WOU

Gentle House 855 Monmouth Ave. N., Monmouth, Oregon 97361




- Strength: Commitment to **Diversity**
- Challenge: Creating **Common Ground**

Housing



- Strength: Recent **Successful Models**
- Challenge: **Dispersed and Outmoded** Housing Models



- **Master Planning for Space Optimization:** Schedule, Utilization, & Efficiency

Change Factors in Higher Education

- Changes in teaching and learning
- Increasing diversity of populations
- Reaping efficiencies in a challenging funding climate



**All have implications for facilities
and space optimization activities**

Data



Analyses &
Metrics



Results &
Recommendations

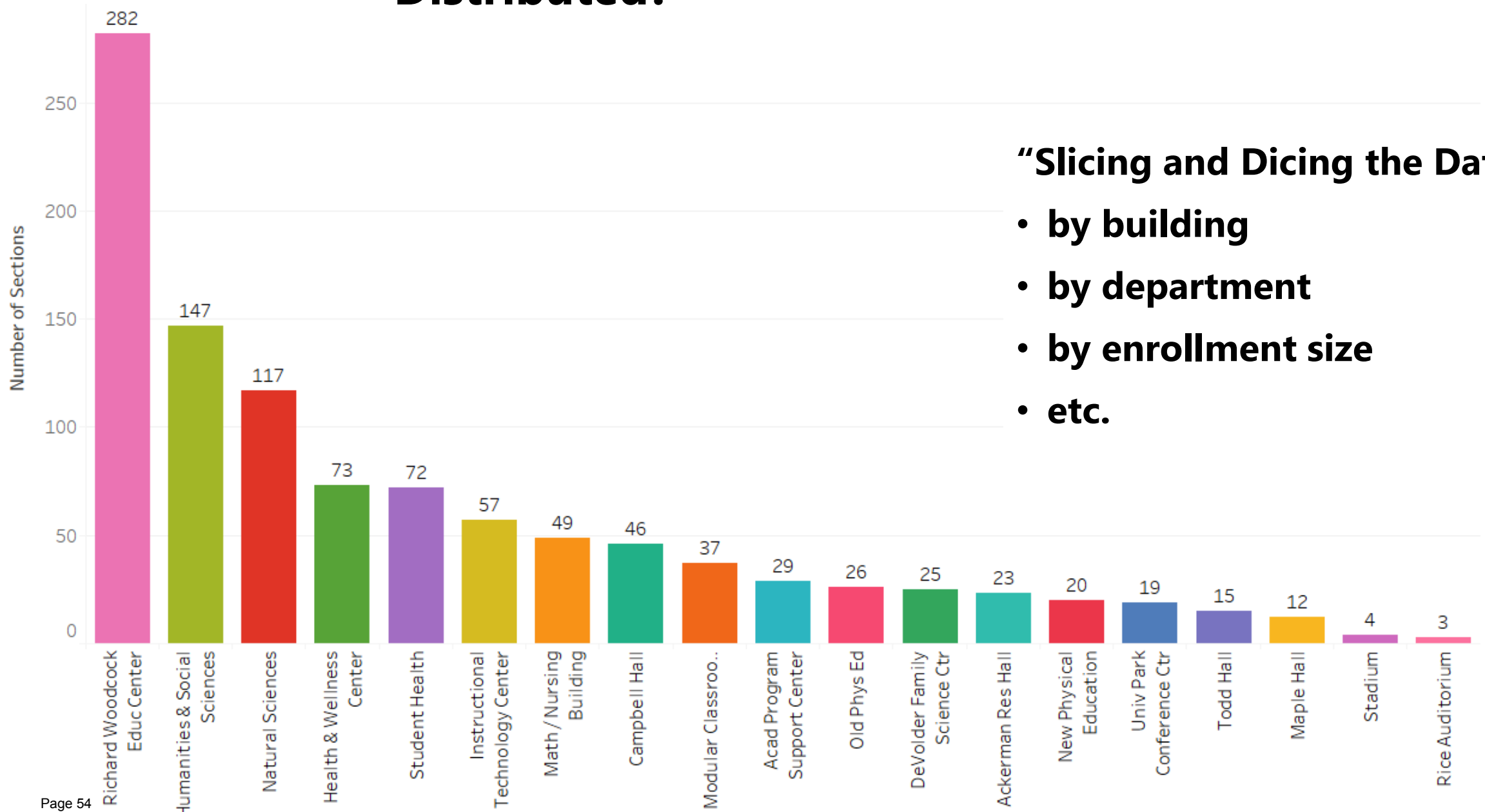


X25[®]



- › Inventory Size and Mix
- › Capacity for Growth
- › Support Spaces
- › Policies and Processes
- › Assessment Tools

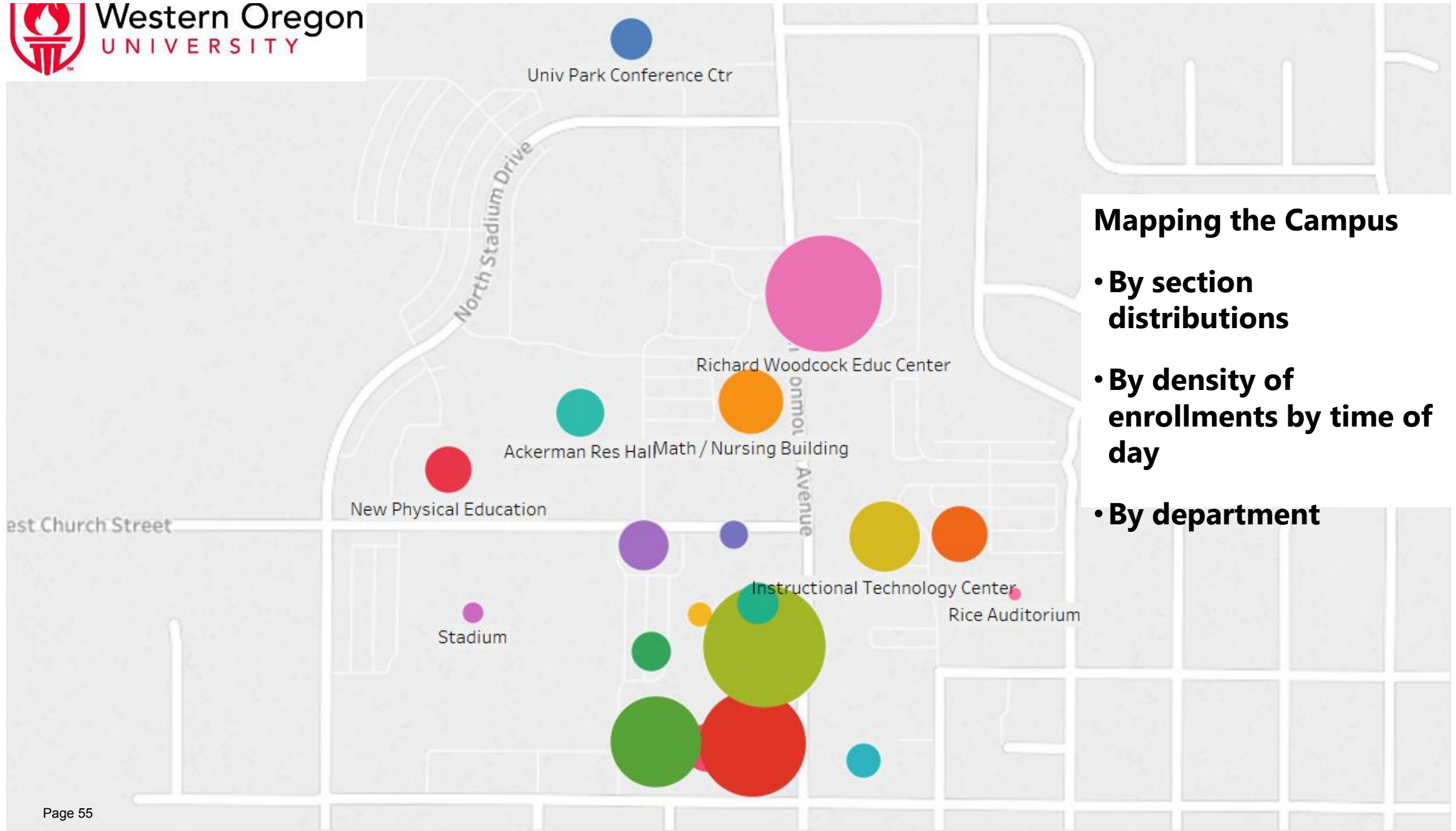
How are WOU Sections Distributed?



“Slicing and Dicing the Data”

- by building
- by department
- by enrollment size
- etc.

Visualizing Space Use by Building



Mapping the Campus

- By section distributions
- By density of enrollments by time of day
- By department



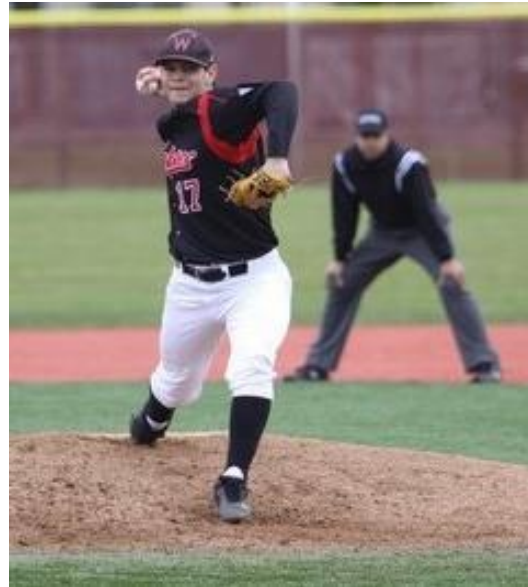
Concept: Align spaces with pedagogies, rather than the reverse



Diversity and Space Planning

- Scheduling & Non-Traditional Students
- More Diversity in Delivery Methods
- Distance Learning & Hybrid Offerings





Support the Student Athlete

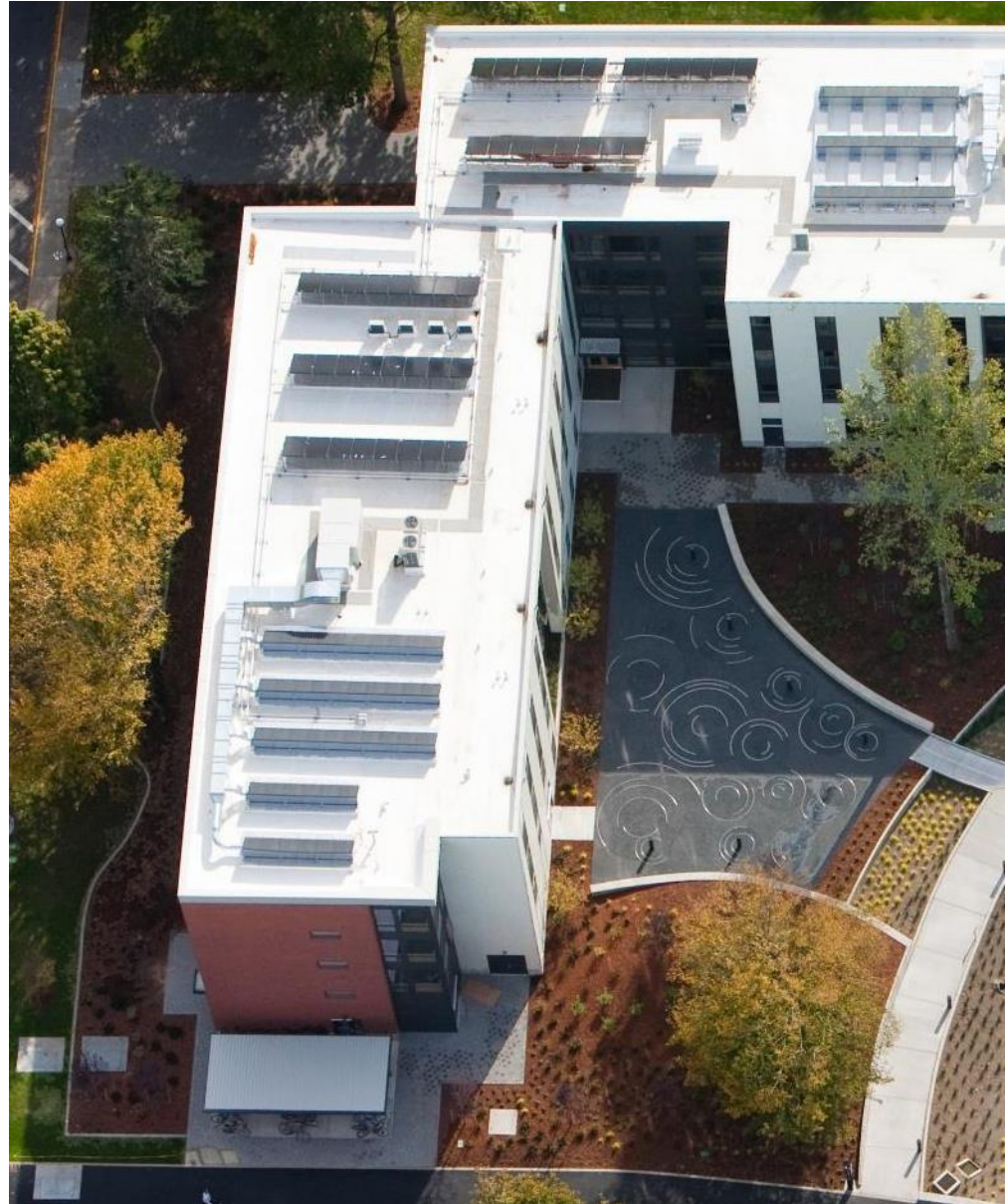






**How will the Master Plan enhance/promote
Western Oregon University's identity in the community?
How will the Master Plan enhance/promote
our relationship with the community?**





Discussion: How Do You **Define Success**?

