

WOU ACE LEARNER SUCCESS LAB

A comprehensive change management process that facilitates continuous improvement through intentional transformation of institutional systems, processes, programs, and culture around learner success.

Kathy Cassity, PhD & Adry Clark, PhD, Chairs

AGENDA

- Overview of the Learner Success Lab
- Model
- Timeline
- Site visit – take-aways
- Committee
- Subcommittees
- Review



CONTEXT FOR THE LAB

Higher Education has to evolve and reinforce our role in our communities

- Increased competition for students - declining traditional aged students
- Diversification of our students
- Dwindling financial resources

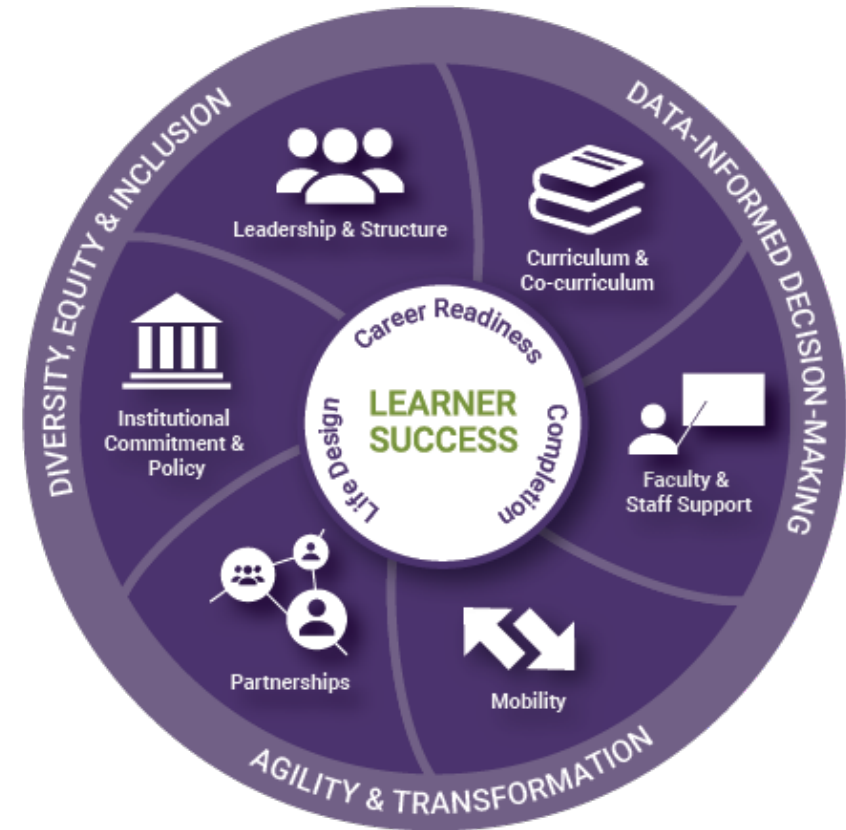
Rooting our changes in tangible and meaningful outcomes that prepare our students for a fast-changing future

LEARNER SUCCESS LAB

An inclusive learning community that integrates evidence-based practices for persistence, life design and career exploration, and workforce skills development to assist participating institutions in developing a **comprehensive strategy for learner success**.

The LSL is a comprehensive change management process that facilitates continuous improvement through intentional transformation of institutional systems, processes, programs, and culture around learner success.

ACE Model for Comprehensive Learner Success

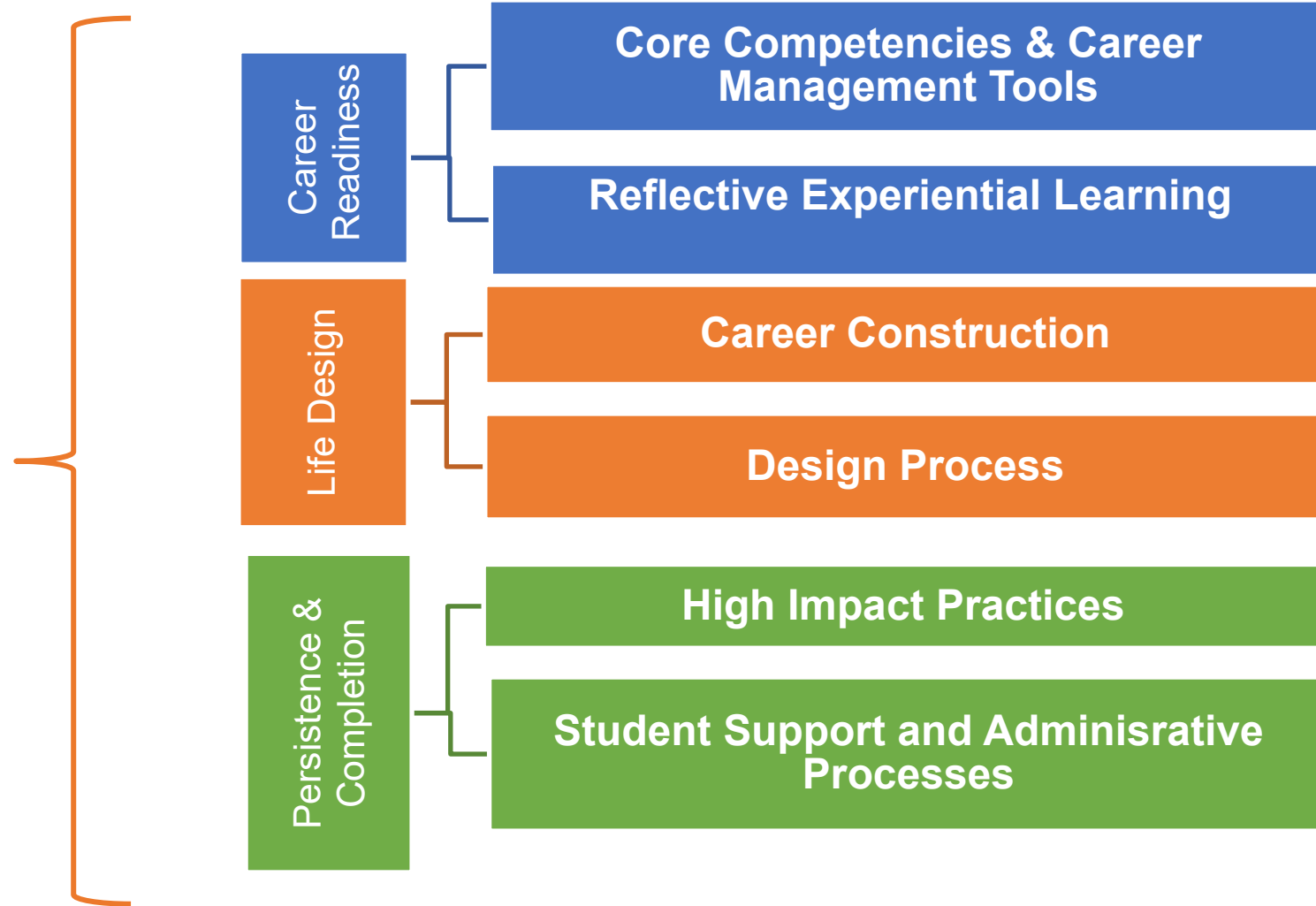


HOW DO WE SUPPORT DIVERSE STUDENTS' SUCCESS?

(how do we know?)

- Institutional Commitment and Policy
- Leadership and Structure
- Curriculum and Co-Curriculum
- Faculty and Staff Support
- Mobility
- Partnerships

ACE LEARNER SUCCESS LAB OUTCOMES AND HOW TO DEVELOP



[Charge](#)

[Website](#)



STEERING COMMITTEE

Steers institution through the LSL, refines and leads the data collection process, and manages subcommittee activities and outputs.

The framework provides us with lenses for looking at the extraordinary events happening around us!

Advisor from ACE: Mary Churchill, Boston University

ACE SITE VISIT

A deep dive by advisor, an experienced university leader, to get a broad perspective of both WOU's assets and challenges

Mary met virtually with President's Cabinet, Academic Success and Advising, FYS Class, Student Affairs Directors, Academic Affairs Exec Committee, ASWOU Cabinet

Main Take-Aways:

Assets:

We are on the verge of being an inclusive community

We have committed people who care deeply about our diverse and marginalized students

Challenges:

Lack of common definitions for concepts in Strategic Plan: Student Success, Diversity, Personalized Approach

Lack of overall structure to support diverse and marginalized students

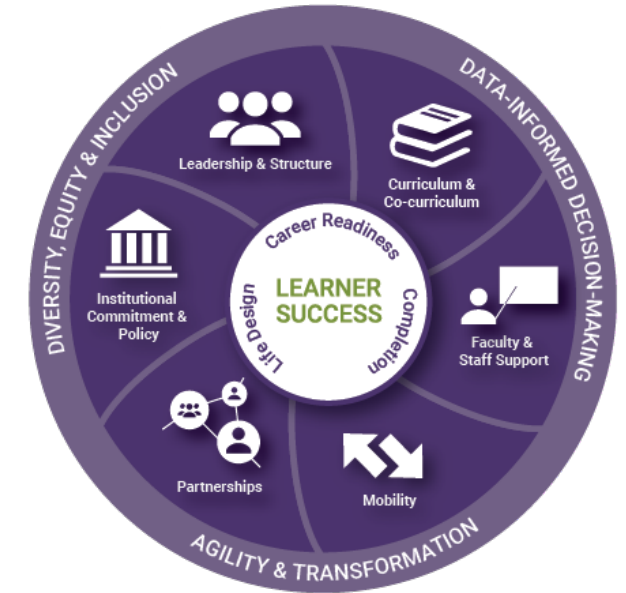
Limited ways to remove systemic barriers

STEERING COMMITTEE MEMBERS

Conveners of reviews aligned with target areas of model

Rajeeb Poudel - Business	Curriculum/Co-Curriculum
Shaun Huston – FYS, Sustainability	Curriculum/Co-Curriculum
Laura Ellingson-Sayen , Ex. Sci.	Faculty/Staff Support
Mary Pettenger – Polit. Sci	Faculty/Staff Support
Dana Schowalter – Comm Studies	Institutional Commitment & Policy
Hillary Fouts – Dean, Grad Stud, Research	Institutional Commitment & Policy
Niki Weight – Acad. Success and Advising	Leadership & Structure
Chelle Batchelor – Dean Library, AI	Leadership and Structure
Feier Hou - Chemistry	Mobility
Kristin Mauro – Transfer Programs	Mobility
Lars Soderlund - English	Partnerships
Yuliana Kenfield - Education	Partnerships

ACE Model for Comprehensive Learner Success



Review Part 1

Core of Model:

Learner

Success

Life Design

Career Readiness

Completion

Bring about
360° thinking

Question our
assumptions

Identify areas
most relevant
to us

Review Part 2

Target Areas

- Institutional Commitment & Policy
- Leadership & Structure
- Curriculum & Co-curriculum
- Faculty & Staff Support
- Mobility
- Partnerships

Strategic Lenses

• **Diversity, Equity & Inclusion**
– main emphasis

• Data-Informed Decision-Making

• Agility & Transformation

TIMELINE

May 20

Form subcommittees, plan reviews (SWOC analysis), develop research questions and methods

June 3

Conduct surveys and other data collection

November 6

Analyze findings

Second site visit - POSSIBLE FOLLOW UP WITH COUNCIL?

January, '22

Write report

April '22

Finalize report

